

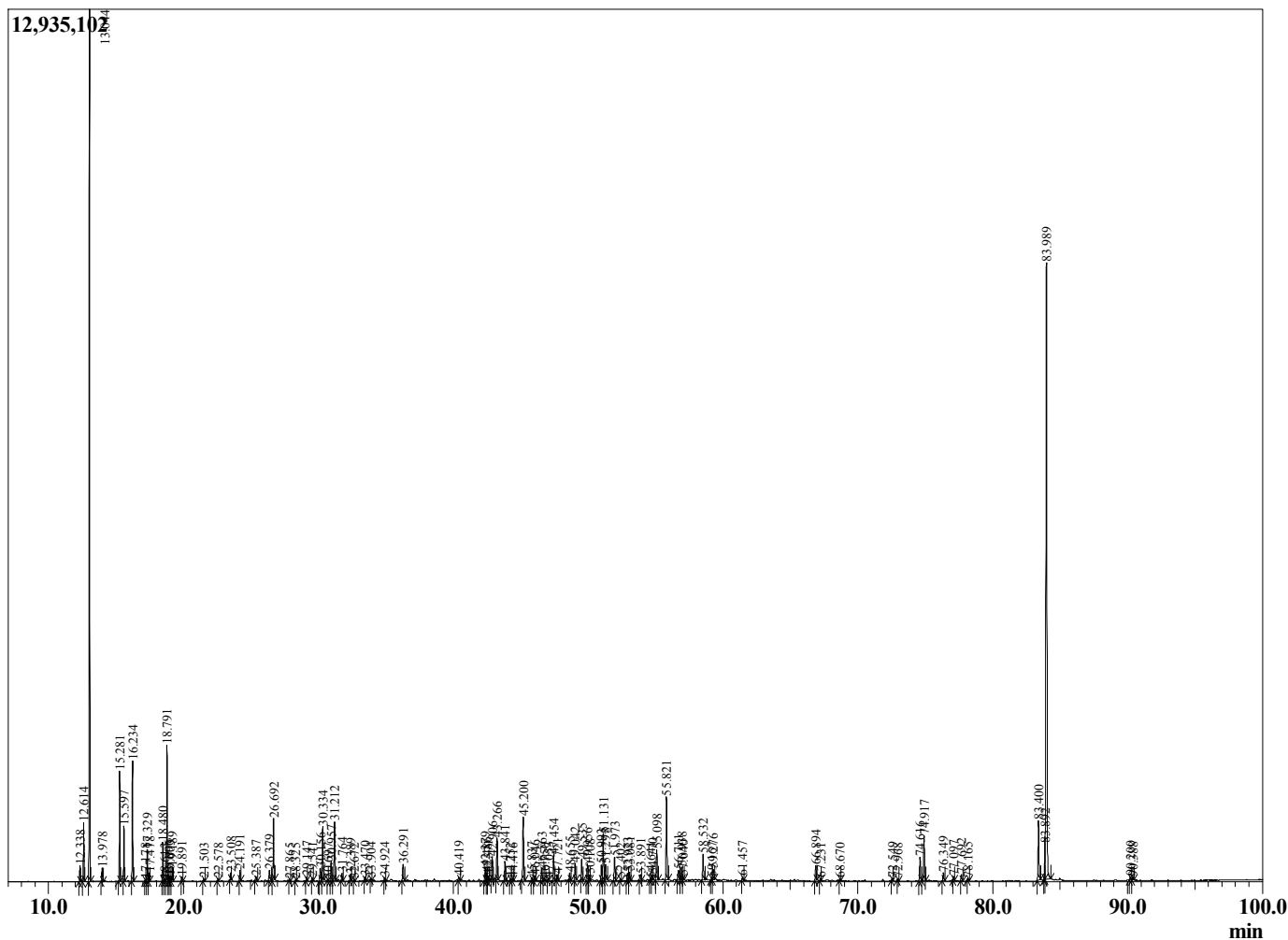
Sample Information

Sample Type : CO2 Extract
 Sample Name : Boswellia carterii

Frankincense CO2 India
 Lot# 2IDP1-PW
 Country: India



Chromatogram Boswellia carterii



R.Time	Name	Area%
12.338	Hashishene	0.36
12.614	alpha-Thujene	1.36
13.044	alpha-Pinene	20.59
13.978	Camphene	0.31
15.281	Sabinene	2.72
15.597	beta-Pinene	1.42
16.234	Myrcene	3.05
17.178	Pseudolimonene	0.03
17.329	alpha-Phellandrene	0.85
17.478	delta-3-Carene	0.22
18.480	para-Cymene	1.02
18.613	Octyl methyl ether	0.05
18.791	Limonene	3.68
18.896	beta-Phellandrene	0.14
19.003	1,8-Cineole	0.14
19.189	cis-beta-Ocimene	0.37
19.891	trans-beta-Ocimene	0.12
21.503	trans-Sabinene hydrate	0.08
22.578	Thujol isomer	0.07
23.508	Linalool	0.19
24.191	Thujol isomer	0.30
25.387	alpha-Campholenal	0.16
26.379	trans-Pinocarveol	0.46
26.692	trans-Verbenol	1.89
27.865	Pinocarvone	0.05
28.325	Unidentified	0.04
29.147	Terpinen-4-ol	0.11
29.541	para-Cymen-8-ol	0.08
30.156	alpha-Terpineol	0.54
30.334	Estragole	1.61
30.697	alpha-Phellandrene epoxide	0.03
30.957	Verbenone	0.61
31.212	Octyl acetate	1.88
31.764	trans-Carveol	0.24
32.389	Decyl methyl ether	0.18
32.672	cis-Carveol	0.04
33.470	Carvone	0.10
33.904	Linalyl acetate + Geraniol	0.04
34.924	3,5-Dimethoxytoluene	0.09
36.291	Bornyl acetate	0.53
40.419	alpha-Terpinyl acetate	0.13
42.379	alpha-Copaene	0.46
42.486	Geranyl acetate	0.23
42.571	Unidentified	0.16
42.906	beta-Bourbonene	0.76
43.266	beta-Elemene	1.39
43.841	Methyleugenol	0.62
44.252	cis-beta-Caryophyllene	0.05
44.416	alpha-Gurjunene	0.05
45.200	beta-Caryophyllene	2.22
45.837	beta-Copaene	0.09
46.046	trans-alpha-Bergamotene	0.17
46.563	6,9-Guaiadiene	0.43
46.750	Unidentified	0.07
47.053	Unidentified	0.06
47.454	alpha-Humulene	0.88

R.Time	Name	Area%
47.721	Alloaromadendrene	0.20
48.655	trans-Cadina-1(6),4-diene	0.23
49.042	Germacrene D	0.57
49.535	beta-Selinene	0.70
49.956	alpha-Selinene	0.67
50.108	alpha-Muurolene	0.18
50.993	gamma-Cadinene	0.54
51.131	Cubebol	1.71
51.298	delta-Cadinene	0.68
51.973	Unidentified	0.85
52.402	Unidentified	0.07
52.923	Elemicin	0.24
53.081	Elemol	0.30
53.891	Unidentified	0.27
54.641	Unidentified	0.07
54.770	Unidentified	0.19
55.098	Caryophyllene oxide	1.16
55.821	Viridiflorol	2.95
56.711	Humulene epoxide II	0.42
56.938	10-epi-gamma-Eudesmol	0.48
57.040	1,10-di-epi-Cubenol	0.09
58.532	alpha-Muurolol (=Torreyol)	0.99
59.167	Unidentified	0.08
59.276	alpha-Eudesmol	0.47
61.457	Unidentified	0.12
66.894	Phellandrene dimer	0.52
67.231	Unidentified	0.07
68.670	Unidentified	0.05
72.549	Unidentified	0.07
72.968	Unidentified	0.07
74.616	Myrcene dimer	0.87
74.917	Neocembrene A	1.68
76.349	Myrcene dimer	0.29
77.097	Unidentified	0.14
77.692	Verticillol	0.22
78.165	Unidentified	0.08
83.400	Unidentified	2.25
83.892	Incensole	0.76
83.989	Serratol	24.65
90.200	Incensyl acetate	0.11
90.388	Incensyl acetate isomer	0.09
127.354	Unidentified	0.10
127.641	alpha-Amyrin	0.21
		100.00